



**GARANSI  
35 TAHUN**



# Best Collection

## Product Catalog



Our Louvered Steel Plate is crafted exclusively from 100% high-quality korean materials, provides reliable, long-lasting protection and efficiency, standing out as a superior choice



PT.  
CITRA ENERGY  
SOO YOUNG

# LOUVER STEEL PANEL OUR EXCELLENCE



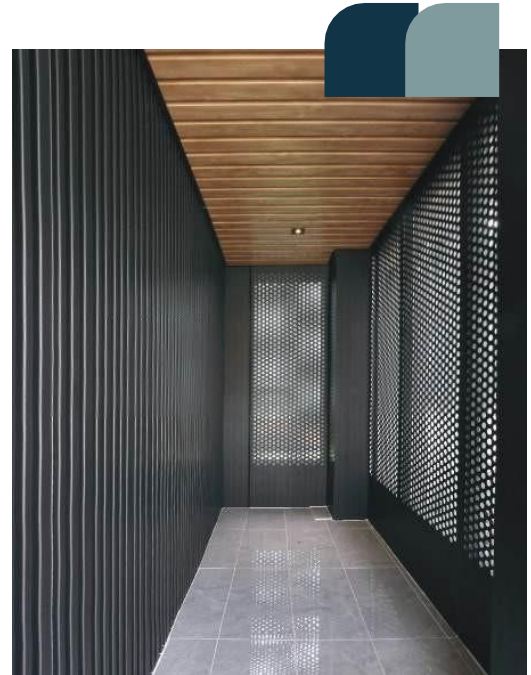
## INFORMATION

Thickness : 0.5<sup>±</sup> m/ m

Standart Size : 2.1m, 2.4m, 2.7m, 3m, 3.3m

Customer Orders size : start 1m until 30m

B2B Price **per m<sup>2</sup>** 275.000 R/p  
Agent Price **per m<sup>2</sup>** 305.000 R/p  
Market Price **per m<sup>2</sup>** 410.000 R/p



### 1 High Elasticity

Our product boasts exceptional elasticity, allowing it to withstand pressure and impact effectively, making it an ideal choice for various applications.

### 2 Heat Resistant

Heat Resistant Designed to withstand high temperatures, our Louvered Steel remains stable and does not deform, making it the perfect solution for extreme environments

### 3 Crack & Break Resistant

With high resistance to cracks and breaks, our Louvered Steel offers optimal durability, even in the most challenging conditions.

### 4 Superior Strength

Superior Strength Despite being lightweight, our Lou-vered steel features a strong structure, providing the safety and reliability needed for a wide range of uses.

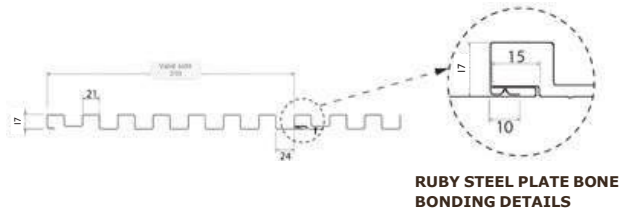


# OUR PRODUCT

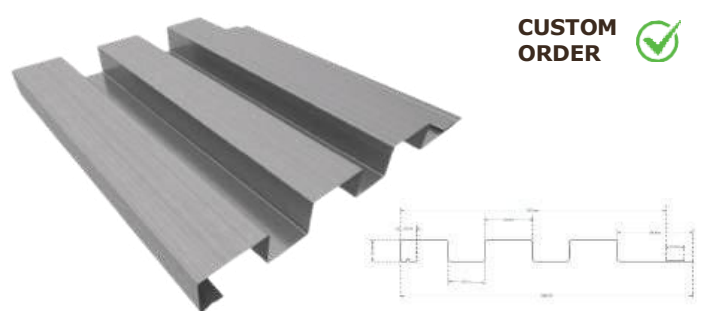


CUSTOM ORDER

**LOUVER STEEL PLATE COW BONE**

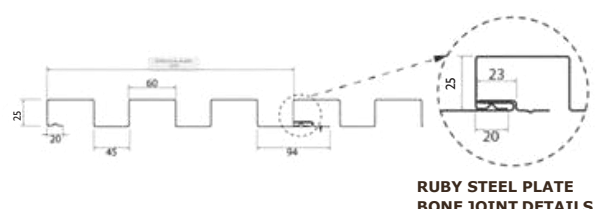


PRODUCT LIMIT			
• STEEL SHEET : 0.5 $\frac{1}{2}$ T m/m	• WIDTH	325	
• COIL WIDTH : 607 MM	• LENGTH	: 500	
• PRODUCT THX : 17 T	• CORNER	: VAR	



CUSTOM ORDER

**LOUVER STEEL PLATE LARGE BONE**



PRODUCT LIMIT			
• STEEL SHEET : 0.5 $\frac{1}{2}$ m/m	• WIDTH	355	
• COIL WIDTH : 607 MM	• LENGTH	: 500	
• PRODUCT THX : 25 T	• CORNER	: VAR	

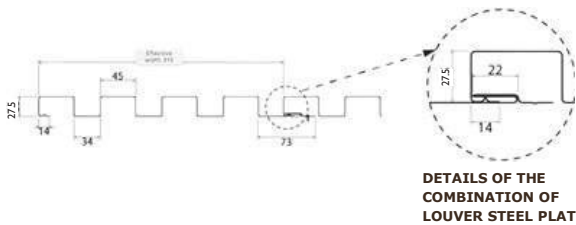


# OUR PRODUCT

# SIZE



## LUVER STEEL PLATE MEDIUM BONE



DETAILS OF THE COMBINATION OF LOUVER STEEL PLATE

### PRODUCT LIMIT

- STEEL SHEET : 0.5  $\frac{1}{m}$ /m
- COIL WIDTH : 607 MM
- PRODUCT THX : 27.5 T
- WIDTH : 314
- LENGTH : 500
- CORNER : VAR





**GARANSI  
35 TAHUN**

# Best Collection

## Product Catalog

Our Zinc Steel Panel is made from 100% premium Korean Materials, offering exceptional strength and durability. Its flexible design ensures easy installation and adaptability for various projects. With a strong anti-corrosion system, these panels resist rust and maintain their appearance.



PT.  
CITRA ENERGY  
SOO YOUNG

# ZINC STEEL PANEL OUR EXCELLENCE



## INFORMATION

Thickness : 0.5 ± m/ m

Standart Size : 2.1m, 2.4m, 2.7m, 3m, 3.3m

Customer Orders size : start 1m until 30m

**B2B Price per m<sup>2</sup> 245.000<sup>R/P</sup>**  
**AGENT PRICE per m<sup>2</sup> 275.000<sup>R/P</sup>**  
**MARKET PRICE per m<sup>2</sup> 380.000<sup>R/P</sup>**



### 1 Advanced Design

Our panels utilize cutting-edge technology to provide superior strength and resilience, ensuring they withstand the regions of any environment.

### 2 Anti-Corrosion System

Equipped with an advanced anti-corrosion treatment, these panels are built to resist rust and deterioration, ensuring longevity and maintaining their aesthetic appeal over time.

### 3 Flexible Workability

Designed for versatility, our Zinc Steel Panels can be easily shaped and installed, accommodating diverse project requirements with ease.

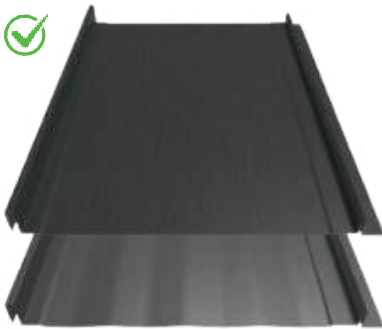
### 4 Exceptional Strength

The robust construction of our panels offers exceptional load-bearing capabilities, making them suitable for both residential and industrial applications.

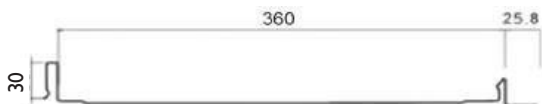


# OUR PRODUCT

CUSTOM ORDER 



Zinc steel plate **360 width**



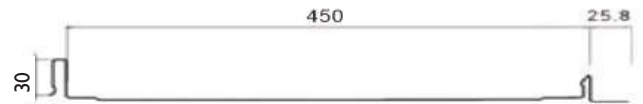
## PRODUCT LIMIT

- Steel Sheet : 0.51<sup>±</sup>T
- Coil Width : 517
- Product THX : 30T
- Width : 360 mm
- Length : min 1000 mm
- Corner : Lock

CUSTOM ORDER 



Zinc steel plate **450width**



## PRODUCT LIMIT

- Steel Sheet : 0.51<sup>±</sup>T
- Coil Width : 607
- Product THX : 30<sup>±</sup>T
- Width : 450 mm
- Length : min 1000 mm
- Corner : Lock



**GREY  
HAIRLINE**



**ZINC  
GRAY**



**ZINC  
BLACK**



**ZINC  
COOPER**



**MULTI  
BLUE**



**CORTEN  
BROWN**



**NATURAL  
WOOD**



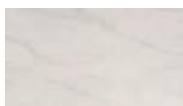
**LIGHT  
WOOD**



**DARK  
WOOD**



**WRINKLE  
BROWN**



**MARBLE**



**SALT**



**CHEST  
NUT**



**AN-  
ORANGE**



**RED**



**IVORY**



**A GREEN  
COLOR**



**A BLUE  
COLOR**



**NEON  
CAMELEON**



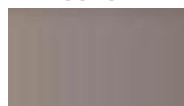
**RED  
GOLD**



**SKY  
GOLD**



**GREY  
GOLD**



**BROWN  
GOLD**



**GARANSI  
35 TAHUN**



# Best Collection Product Catalog



Manufactures high-quality Steel Roof / every product. Spandex product with global Regulations, Manufacturing, Production Systems, & Certification in the steel industry. We use premium materials sourced from South Korea, ensuring the authenticity and quality of.



PT.  
CITRA ENERGY  
SOO YOUNG

# SPANDEK STEEL

## OUR EXCELLENCE

BEST  
PRODUCT

BEST  
QUALITY

BEST  
PRICE

## INFORMATION

Thickness : 0.4 m/m & 0.5<sup>±</sup> m/ m

Standart Size : 2.1m, 2.4m, 2.7m, 3m, 3.3m

Customer Orders size : start 1m until 30m



0.4 m/m x **per m<sup>2</sup>** 175.000 R/p  
0,51 m/m x **per m<sup>2</sup>** 195.000 R/p

## OUR COATED SYSTEM



### EXCELLENT DURABILITY

it has three to six times better corrosion resistance than any galvanized coatings



### HEAT RESISTANCE

The capacity ratio is over 80% and temperature 315°C



### HEAT REFLECTIVITY

Provides high energy efficiency with its superior heat reflectivity, resulting in low heat consumption



### ECONOMICAL EFFICIENCY

It reduces the loss and is suitable for manufacturing ducts and other construction materials



### EXCELLENT PAINTABILITY AND WORKABILITY

It has better adhesiveness of paints to its coated layer compared to galvanized steel sheet enhances the durability of the processed area



### SMOOTH SURFACE

Having a consistent and brilliant silver spangle, our coating is highly appropriate for decorative uses

## OUR COMPOSITION

Composition	Weight Ratio(%)	Capacity Ratio(%)
Aluminum	55.0	80
Zinc	43.4	19
Silicon	1.6	1

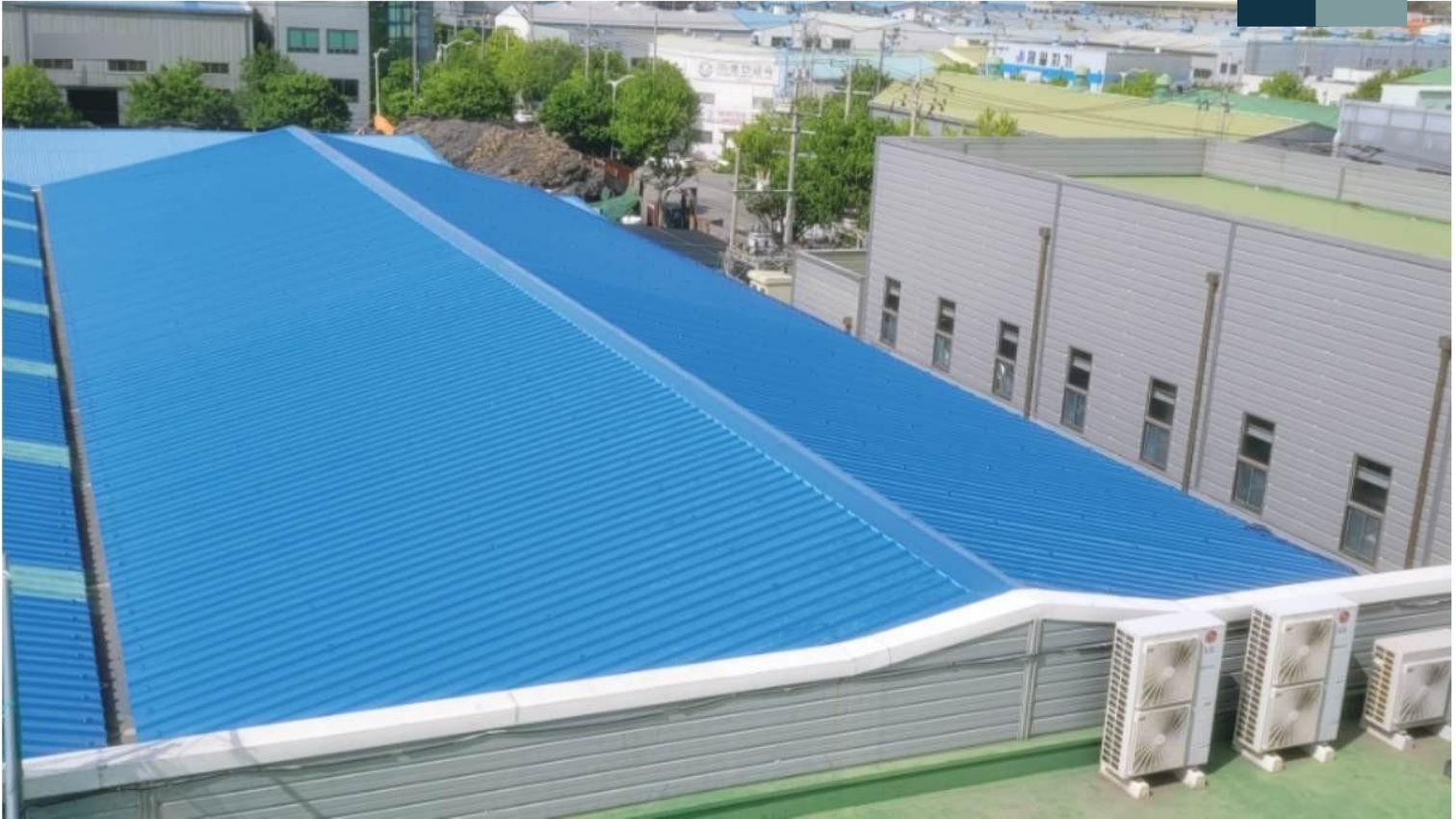
## AN ORGANIC COATING PROCESS

HIGH  
CORROSION  
RESISTANCE

LUBRICATION  
PROPERTIES  
(NO NEED FOR  
LUBRICATION OIL)

PAINTABILITY

ANTI-FINGERPRINT  
PROPERTIES

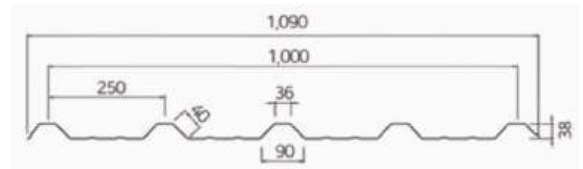
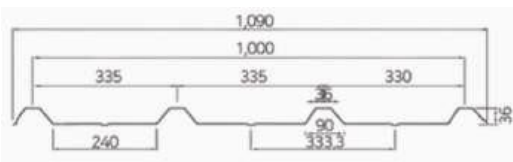
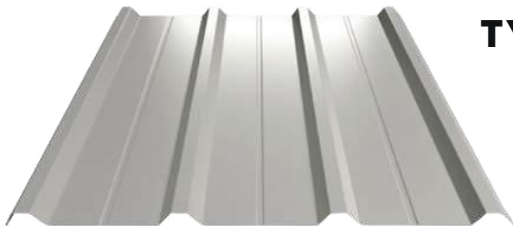


# OUR PRODUCT

CUSTOM ORDER  V-330

V-250 CUSTOM ORDER 

## TYPES STEEL PLATE



Product Characteristics : MSV 330  
Type : 1219  
Steel Sheet : 0.4 m/m

Product width: 1090 (1000)  
Bone gap :333  
Deep in the bone : 35

Product Characteristics : MSV-250  
Type : 1219  
Steel Sheet : 0.4 m/m

Number of golas : 4  
A use combination method : Roof and wall overlap

Marrow : 3 A use  
Combination Method : A roof overlap

Product width: 1090 (1000)  
Bone gap :250  
Deep in the bone : 32

# ADVANTAGES

- Made from a mixture of aluminum and zinc
  - Light and strong
  - Flexible structure and easy to shape
- Corrosion resistant and long term use
  - Easy to install and affordable price
  - Withstands even extreme weather
    - Prevent stagnant water
- Channels rainwater from the roof to a lower drain

**ROOF STEEL IS OFTEN USED IN**

